

Santa Cruz MOB

5940 Soquel Avenue
Santa Cruz, CA 95062

PMB Real Estate Services

3394 Carmel Mountain Road
Suite 200
San Diego, CA 92121
(858) 794-1900
(858) 737-2491 fax
<http://www.pmbres.com/>

SMITHGROUP

301 BATTERY STREET
7TH FLOOR
SAN FRANCISCO, CA 94111
415.227.0100
www.smithgroup.com

Swift Consulting Services

500 CHESTNUT STREET
STE. 100
SANTA CRUZ, CA 95060
831.459.9992
831.459.9998 fax
<http://www.swiftconsultingservice.com>

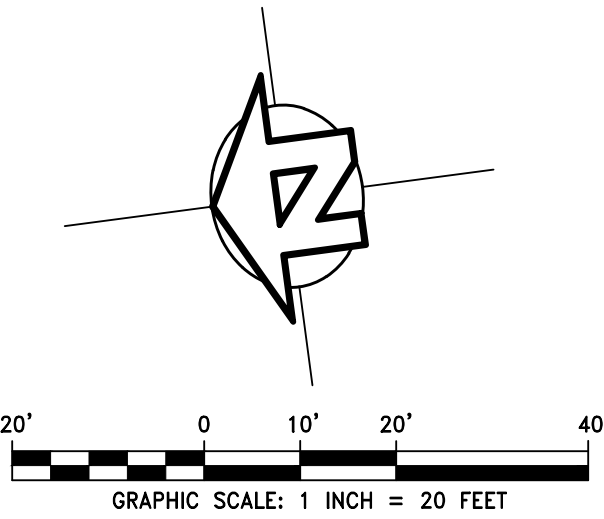
VOLUME I OF I

ISSUED FOR:
PERMIT RESUBMITTAL

ISSUE DATE:
JUNE 24, 2019

SG Project # 21739.000





PRELIMINARY EARTHWORK QUANTITIES

±900 CUBIC YARDS EXCAVATION
±7,900 CUBIC YARDS EMBANKMENT
±7,000 CUBIC YARDS IMPORT

NOTES:

- ESTIMATE DOES NOT INCLUDE STRIPPINGS, UTILITY TRENCH VOLUMES OR ANY OVEREXCAVATION, IF REQUIRED BY SITE CONDITIONS.
- ESTIMATE ASSUMES A 15% COMPACTION FACTOR ON ALL FILL MATERIAL AND A 0% EXPANSION FACTOR ON ALL CUT MATERIAL.
- EARTHWORK QUANTITIES ARE PRELIMINARY ESTIMATES ONLY. DURING FINAL PROJECT DESIGN ESTIMATES MAY BE ADJUSTED TO ACCOUNT FOR UNSUITABLE SOILS, EXISTING PAVED SURFACES AND SITE STRIPPINGS SHOULD SUCH INFORMATION BE AVAILABLE.

SMITHGROUP

Architect
301 BATTERY STREET
7TH FLOOR
SAN FRANCISCO, CA 94111
415.227.0100
www.smithgroup.com

ARUP

MEP
ARUP
560 Mission Street, Suite 700
San Francisco, CA 94105
415.957.9445

WALKER CONSULTANTS

Parking
WALKER CONSULTANTS
601 California St, Suite 820
San Francisco, CA 94108
415.644.9630

IFLAND ENGINEERS

Civil
IFLAND ENGINEERS, INC.
5300 Soquel Avenue, Suite 101
Santa Cruz, CA 95062
831.426.5313

miyamoto.

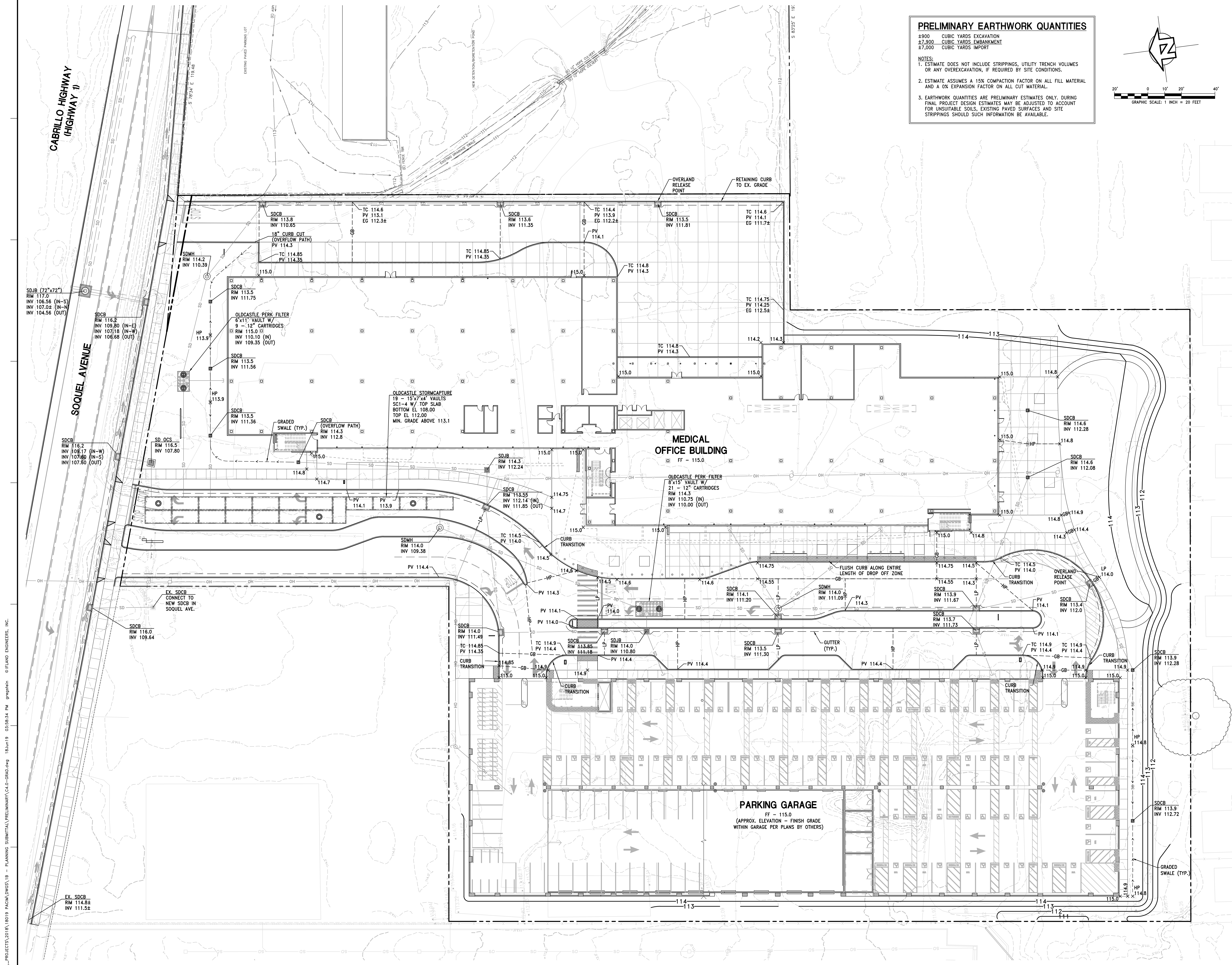
Structural
MIYAMOTO INTERNATIONAL, INC.
1450 Hayward Drive, Suite One
West Sacramento, CA 95691
916.373.1995

ISSUED FOR	REV	DATE
PERMIT RESUBMITTAL		06/24/2019
PERMIT APPLICATION		03/27/2019
PRE-APPLICATION SUBMITTAL		08/23/2018

SEALS AND SIGNATURES

NOT FOR CONSTRUCTION

SHEET TITLE
GRADING PLAN



I:\PROJECTS\2018\18019 PACIFIC\DWG\18 - PLANNING SUBMITTAL\PRELIMINARY\C4.0-GRAB.dwg 18Jun19 03:56:34 PM gregshin © IFLAND ENGINEERS, INC.

SMITHGROUP

Architect
301 BATTERY STREET
7TH FLOOR
SAN FRANCISCO, CA 94111
415.227.0100
www.smithgroup.com

ARUP

MEP
ARUP
560 Mission Street, Suite 700
San Francisco, CA 94105
415.957.9445

WALKER CONSULTANTS

Parking
WALKER CONSULTANTS
601 California St, Suite 820
San Francisco, CA 94108
415.644.0630

IFLAND ENGINEERS

Civil
IFLAND ENGINEERS, INC.
5300 Soquel Avenue, Suite 101
Santa Cruz, CA 95062
831.426.5313

miyamoto.

Structural
MIYAMOTO INTERNATIONAL, INC.
555 Montgomery Street, Suite 803
San Francisco, CA 94111
415.230.7097

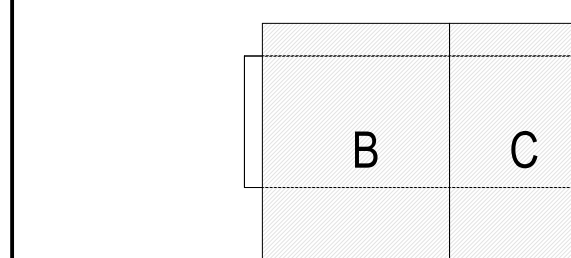
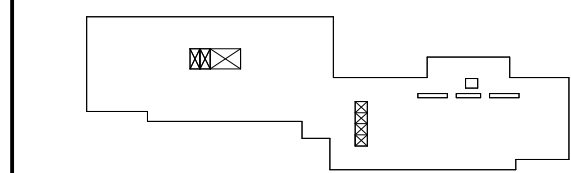
ISSUED FOR REV DATE

PERMIT RESUBMITTAL 06/24/2019
PERMIT APPLICATION 03/27/2019
PRE-APPLICATION SUBMITTAL 08/23/2018

SEALS AND SIGNATURES

NOT FOR CONSTRUCTION

KEYPLAN PROJECT NORTH



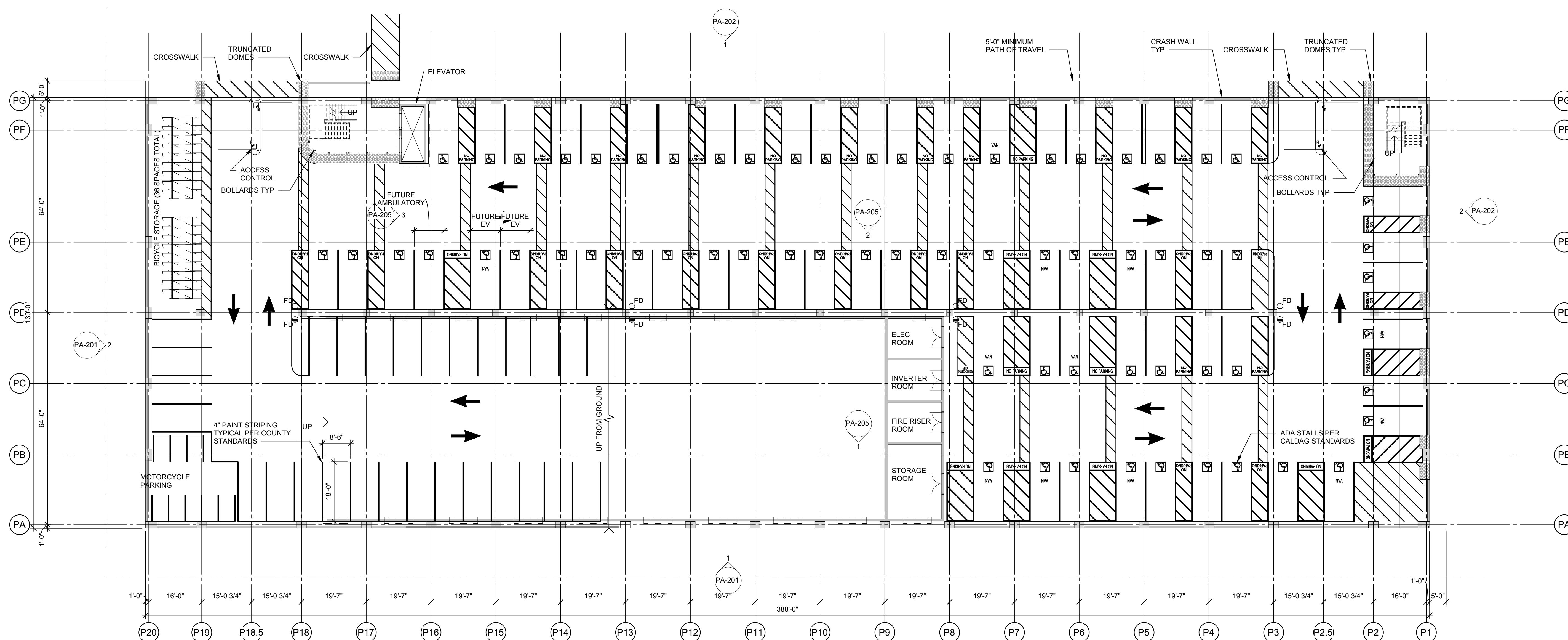
SHEET TITLE
GROUND LEVEL PLAN

PROJECT NUMBER

PROJECT NUMBER

PA-101

SHEET NUMBER



1 GROUND LEVEL PLAN
1/16" = 1'-0"

PARKING SCHEDULE BY LEVEL		
LEVEL	STALL TYPE	COUNT
GROUND LEVEL	Standard Stall	52
GROUND LEVEL	Accessible	53
GROUND LEVEL	Van Accessible	11
GROUND LEVEL	Van Accessible EV	1
GROUND LEVEL	Accessible EV	1
GROUND LEVEL	Ambulatory EV	1
GROUND LEVEL: 119		

SECOND LEVEL	Standard Stall	142
SECOND LEVEL	Future EV	22
SECOND LEVEL: 164		

THIRD LEVEL	Standard Stall	141
THIRD LEVEL	Future EV	22
THIRD LEVEL: 163		

FOURTH LEVEL	Standard Stall	164
FOURTH LEVEL: 164		

FIFTH LEVEL	Standard Stall	120
FIFTH LEVEL: 120		
TOTAL PARKING: 730		

MOTORCYCLE PARKING		
LEVEL	STALL TYPE	COUNT

GROUND LEVEL	Motorcycle	8
GROUND LEVEL: 8		

SECOND LEVEL	Motorcycle	8
SECOND LEVEL: 8		

THIRD LEVEL	Motorcycle	8
THIRD LEVEL: 8		

FOURTH LEVEL	Motorcycle	8
FOURTH LEVEL: 8		

FIFTH LEVEL	Motorcycle	6
FIFTH LEVEL: 6		
TOTAL PARKING: 38		

ARCHITECTURAL ABBREVIATIONS

A	AB ANCHOR BOLT ACT ACoustICAL CEILING TILE ACP ACoustical PANEL ACS PNL ACCESS PANEL AD AREA DRAIN ADL ADDITIONAL ADH ADHESIVE ADJ ADJUSTABLE ADJ ADJACENT AFF ABOVE FINISH FLOOR AFG ABOVE FINISH GRADE AFS ABOVE FINISH SLAB AGGR AGGREGATE ALUM ALUMINUM ALT ALTERNATE AND APPROXIMATE(LY) APPROX APPROXIMATE(LY) ARCH ARCHITECTURAL ASPH ASPHALT AVG AVERAGE	H	H HIGH HB HOSE BIBB HC HOLLOW CORE HD HEAD HDB HARDBOARD HW HARDWARE HDWD HARDWOOD HGT HEIGHT HM HOLLOW METAL HNDRL HANDRAIL HORIZ HORIZONTAL HPT HIGH POINT HR HOUR HVAC HEATING-VENTILATION-AIR CONDITIONING HW HOT WATER	R	R RISER RA RETURN AIR RAD RAD RB RESILIENT BASE RCB REFLECTED CEILING PANEL RCPT RECEPTACLE RD ROOF DRAIN REC RECTANGULAR REF REFERENCE REFR REFRIGERATOR REG REGISTER RENG REINFORCE (D) (ING) (MENT) REQ REQUIRED REOT REQUIREMENT RESL RESILIENT RET RETURN REV REVISION RF RESILIENT FLOORING RH RIGHT HAND RHM ROUND HEAD MACHINE SCREW RHWS ROUND HEAD WOOD SCREW RM ROOM RND ROUND RO ROUGH OPENING ROW RIGHT OF WAY RWL RAIN WATER LEADER
B	BB BULLETIN BOARD BO BOARD BTWN BETWEEN BITUM BITUMINOUS BLDG BUILDING BM BENCHMARK BOT BOTTOM BOS BOTTOM OF STEEL BRG BEARING BSMT BASEMENT BUR BUILT UP ROOFING SYSTEM	I	ID INSIDE DIAMETER INCH IN INCD INCANDESCENT INCL INCLUDE, INCLUDING INFO INFORMATION INSUL INSULATION INTR INTERIOR INV INVERT IVT INTRAVENOUS TRACK	S	S SOUTH SA SUPPLY AIR SB SPLASH BACK SC SOLID CORE SCHD SCHEDULE SHT SHEET SDR STORM DRAIN SE SOUTHEAST SECT SECTION SEG SEGMENT SEP SEPARATION OR SEPARATE SEP JT SEPARATION JOINT SHT SHEET, SHEETING SHWR SHOWER SHV SHELVES, SHELVING SIM SIMILAR SINK SINK SMS SHEET METAL SCREW SMS SPACE, SPACING, SPACING SPEC SPECIFICATION SPKLR SPRINKLER SPKR SPEAKER SQ SQUARE SS SANITARY SINK SSK SERVICE SINK SSS STAINLESS STEEL ST STREET STA STATION STAG STAGGERED STC SOUND TRANSMISSION COEFFICIENT STD STANDARD STL STEEL STR STORAGE STRUCT STRUCTURAL STS SELF-TAPPING STEEL SUSP SUSPENDED SUSP CLG SUSPENDED CEILING SUSP SERVICE SW SOUTHWEST SYMM SYMMETRICAL SYST SYSTEM
C	CAB CABINET CB CATCH BASIN CCR CARD CONTROL, READER CCT CUBICLE CURTAIN TRACK CCTV CLOSED CIRCUIT TELEVISION CG CORNER GUARD CEM CEMENT, CEMENTITIOUS CER CERAMIC CHBD CHALKBOARD CI CAST IRON CJ CENTER JOINT CL CENTER LINE CLG CEILING CLR CLEAR CMU CONCRETE MASONRY UNIT COUNTER COUNTER COL COLUMN CONC CONCRETE CONF CONFERENCE CONN CONNECTION CONSTR CONSTRUCTION CONT CONTINUOUS CONTR CONTRACTOR CORR CORRUGATED CPT CARPET CSK COUNTERSUNK CSP COMBINATION STANDPIPE CSEWORK CASEWORK CSNK CERAMIC TILE CU CUBIC CW COLD WATER	J	JG KILOGRAM KIT KITCHEN KPL KICK PLATE KS KNEE SPACE	T	T TREAD T&B TOP AND BOTTOM TAG TAG MISC MISCELLANEOUS MLOG MOLDING MM MILLIMETERS MOD MASONRY OPENING MODU MODULE, MODULAR MTD MOUNTED MTC MOUNTING MVB MOVABLE MULL MULLION
D	D DEPTH DBL DOUBLE DBL ACT DOUBLE ACTING DEG DEGREE DEMO DEMOLISH DEPT DEPARTMENT DET DETAIL DF DRINKING FOUNTAIN DIA DIAMETER DIAG DIAGONAL DIFF DIFFUSER DIM DIMENSION DIM PT DIMENSION POINT DISP DISPENSER DIST DISTANCE DN DOWN DRN DRAIN DS DOWNSPOUT DST DRY STANDPIPE DTP DRAPERY TRACK DWG DRAWING DWGS DRAWINGS	K	KG KILOGRAM KIT KITCHEN KPL KICK PLATE KS KNEE SPACE	U	UC UNDER COUNTER UL UNDERWRITERS LABORATORIES UNON UNLESS OTHERWISE NOTED UNINT UNINTERRUPTIBLE POWER SUPPLY UTIL UTILITY
E	(E) EXISTING EA EACH EDR EQUIPMENT DRAWING EG EDGE GUARD EFS EXTERIOR INSULATION FINISH SYSTEM EL ELEVATION ELAST ELASTOMERIC ELEC ELECTRICAL ELEV ELEVATOR EMER EMERGENCY ENCL ENCLOSURE ENGR ENGINEER EOS EDGE OF SLAB EP ELECTRICAL PANEL EPB ELECTRICAL PANEL BOARD EPM ETHYLENE PROPYLENE DIENE MONOMER EQ EQUAL EQ SP EQUALLY SPACED EQUIP EQUIPMENT EQUIV EQUIVALENT ESCAL ESCALATOR EST ESTIMATE(D) EWC ELECTRIC WATER COOLER EXC EXCAVATED EXH EXHAUST EXP EXPANSION EXP JT EXPANSION JOINT EXT EXTERIOR	L	L LENGTH, LONG LAB LABORATORY LAM LAMINATE, LAMINATION LAV LAVATORY LB POUND LED LIGHT EMITTING DIODE LF LINEAR FOOT LG LENGTH LIN LINEAR LL LEAD LINED LPT LOW POINT LGT LIGHT LT WT LIGHT WEIGHT LVR LOUVER	V	VAC VACUUM VB VALVE BOX VCT VINYL COMPOSITION TILE VERT VERTICAL VEST VESTIBULE VIT VITREOUS VP VENT PIPE VOL VOLUME VWC VINYL WALL COVERING
F	FF FACE TO FACE FA FIRE ALARM FAS FIRE ALARM STATION FB FLAT BAR FCU FAN COIL UNIT FD FLOOR DRAIN FDC FIRE DEPARTMENT CONNECTION FDN FOUNDATION FEC FIRE EXTINGUISHER CABINET FE FIRE EXTINGUISHER FF FINISH FACE FHC FIRE HOSE CABINET FHFC FIRE HOSE / FIRE EXTINGUISHER CABINET FHS FLAT HEAD MACHINE SCREW FHW FLAT HEAD WOOD SCREW PHY FIRE HYDRANT FLAM FLAMMABLE FLASH FLASHING FLEX FLEXIBLE FLUOR FLUORESCENT FO FACE OF FSB FOLDING SHOWER BENCH FSTNR FASTENER FT FOOT, FEET FTG FOOTING FURN FURNITURE FXTR FIXTURE	M	M METERS MACH MACHINE MATL MATERIAL MATV MASTER ANTENNA TELEVISION SYSTEM MAX MAXIMUM MB MACHINE BOLT MC MEDICINE CABINET MDO MEDIUM DENSITY OVERLAY MECH MECHANICAL MEMB MEMBRANE MFR MANUFACTURER MH MANHOLE MIN MINIMUM MISC MISCELLANEOUS MLDG MOLDING MM MILLIMETERS MOD MASONRY OPENING MODU MODULE, MODULAR MTD MOUNTED MTC MOUNTING MVB MOVABLE MULL MULLION	W	W WEST W WITH W/O WITHOUT W/W WALL TO WALL WC WATER CLOSET OR WALL COVERING WD WOOD WID WINDOW WGL WIRE GLASS WCHR WHEELCHAIR WM WIRE MESH WO WHERE OCCURS WPT WORKING POINT WR WATER RESISTANT WSC WANSOT WSP WET STANDPIPE WT WEIGHT WTHPRF WEATHERPROOF WTRPFR WATERPROOF WWR WELDED WIRE FABRIC WWR WELDED WIRE MESH
G	G GAS GA GAUGE, GAGE GAL GALLON GALV GALVANIZED GB GRAB BAR GC GENERAL CONTRACTOR GFR GLASS FIBER REINFORCED CONCRETE GFRG GLASS FIBER REINFORCED GYPSUM GL GLASS GLU GLUE LAMINATED GLZ GLAZING GR GRADE OR GRADING GVL GRAVEL GYP GYPSUM GYP BD GYPSUM BOARD GYP PLAS GYPSUM PLASTER	N	(N) NEW NA NOT APPLICABLE NAT NATURAL NE NORTHEAST NIC NOT IN CONTRACT NR NUMBER NOM NOMINAL NRC NOISE REDUCTION COEFFICIENT NTS NOT TO SCALE NW NORTHWEST	X	X TRANSFORMER

ARCHITECTURAL FLOOR PLAN SYMBOLS

DIMENSION SYMBOLS	DIMENSION SHOWN TO: - STRUCTURAL GRID - LAYOUT GRID - CENTERLINE OF ASSEMBLY - CENTER OF OPENING - CENTER OF EQUI/FURN	FIRE EXTINGUISHER SYMBOLS	FEKT FIRE EXTINGUISHER BRACKET MOUNTED FEC FIRE EXTINGUISHER SURFACE MOUNTED FEC FIRE EXTINGUISHER CABINET SEMI-RECESSED FEC FIRE EXTINGUISHER CABINET RECESSED
GENERAL SYMBOLS	BASE CABINETS BASE AND WALL CABINETS WALL CABINETS TOILET PARTITION AND DOOR HANDRAIL BUMPER GUARD CORNER GUARD EDGE GUARD OVERHEAD ITEMS UNDER-COUNTER ITEMS NIC NOT-IN-CONTRACT ITEMS	PLUMBING SYMBOLS	TOILET - WALL HUNG URINAL - FLOOR/WALL HUNG LAVATORY - COUNTERTOP LAVATORY - PEDESTAL/WALL HUNG UTILITY SINK DRINKING FOUNTAIN / EWC JANITOR'S RECEPTOR BATH TUB SHOWER FLOOR DRAIN IN SLOPING FLOOR

ARCHITECTURAL DEMOLITION SYMBOLS

EXISTING PARTITION TO REMAIN	EXISTING WINDOW TO REMAIN
EXISTING PARTITION TO BE REMOVED	EXISTING WINDOW TO BE REMOVED
EXISTING DOOR TO REMAIN	EXISTING LAY-IN CEILING TO REMAIN
EXISTING DOOR AND FRAME TO BE REMOVED	EXISTING LAY-IN CEILING TO BE REMOVED

DOOR AND INTERIOR OPENING SYMBOLS

DOOR OPENING MARK	2 PANEL BI-FOLD DOOR
SINGLE OPENING DOOR	PAIR - BI FOLD DOOR
DOUBLE ACTING DOOR	OVERHEAD ROLLING DOOR
PAIR DOORS - EQUAL SIZES	INTERIOR GLAZED WINDOW
PAIR DOORS - UNEQUAL SIZES	DOOR WITH SIDE LIGHT
PAIR DOORS - DOUBLE EGRESS	SLIDING DOOR - BETWEEN JAMBS
	SLIDING POCKET DOOR

ARCH REFLECTED CEILING PLAN SYMBOLS

ARCHITECTURAL	2'x4' LAY IN ACOUSTIC TILE CEILING 2'x2' LAY IN ACOUSTIC TILE CEILING GYPSUM BOARD ACCESS PANEL	ELECTRICAL	2'x4' LIGHTING FIXTURE 2'x2' LIGHTING FIXTURE 1'x4' LIGHTING FIXTURE LIGHTING STRIP FIXTURE RECESSED DOWN LIGHT WALL WASH TRACK LIGHTING EXIT SIGN, SINGLE-SIDED EXIT SIGN, DOUBLE-SIDED FIRE ALARM SPEAKER SMOKE DETECTOR WIRELESS INTERNET
MECHANICAL	SUPPLY GRILLE RETURN GRILLE EXHAUST GRILLE LINEAR DIFFUSER SPRINKLER HEAD - CLG MOUNT SPRINKLER HEAD - WALL MOUNT	MISCELLANEOUS	HEIGHT OF CEILING FINISH ABOVE FINISH FLOOR

ARCHITECTURAL REFERENCE SYMBOLS

BUILDING SECTION	WALL SECTION NUMBER DIRECTION OF VIEW SHEET WHERE DRAWN	REVISION NUMBER AND EXTENT	REVISION NUMBER - SEE REVISION HISTORY ON THE TITLE BLOCK OF EACH SHEET EXTENT OF CURRENT REVISION
WALL SECTION	WALL SECTION NUMBER DIRECTION OF VIEW SHEET WHERE DRAWN	SHEET KEYNOTE MARK	SEE CORRESPONDING NUMBERED KEYNOTE ON SHEET WHERE REFERENCE OCCURS
EXTERIOR ELEVATION	ELEVATION NUMBER AND DIRECTION SHEET WHERE DRAWN	REFERENCE KEYNOTE MARK	THE FIRST SIX DIGITS REPRESENT THE SPECIFICATION SECTION EXAMPLE 1: 088000 A03 EXAMPLE 2: 061600 58" PLYWOOD REFER TO THE SHEET WHERE CONTINUATION IS FOUND REFER TO THE SHEETS EITHER SIDE OF THE MATCH LINE
DETAIL REFERENCE	DETAIL NUMBER SHEET WHERE DRAWN, HYPHEN INDICATES DETAIL ON SAME SHEET	MATCH LINE REFERENCES	REFER TO THE SHEET A2.1.1 OR REFER TO THE SHEETS EITHER SIDE OF THE MATCH LINE
SECTION DETAIL REFERENCE	ELEVATION NUMBER AND DIRECTION SHEET WHERE DRAWN	DRAWING TITLE SYMBOLS	View Name SCALE: 1/8" = 1'-0" View Name SCALE: 1/8" = 1'-0"
INTERIOR ELEVATION REFERENCE	ELEVATION NUMBER AND DIRECTION OF VIEW SHEET WHERE DRAWN	LAYOUT GRID LINES	NEW GRID IDENTIFICATION EXISTING GRID IDENTIFICATION
ROOM NAME AND NUMBER	Room Name 101	NORTH ARROW REFERENCES	NORTH PROJECT NORTH TRUE NORTH
WINDOW AND LOUVER TYPE MARK	SEE CORRESPONDING NUMBER ON SCHEDULE SEE ASSEMBLY TYPE FOR DETAILS		
LEVEL LINE	NAME OF LEVEL SECOND LEVEL -10'-0"		

ARCHITECTURAL MATERIAL INDICATIONS

PLAN AND SECTION	EARTH AGGREGATE BASE COURSE CONCRETE CONCRETE MASONRY UNIT BRICK MASONRY PRECAST CONCRETE LIMESTONE, SANDSTONE, GRANITE MARBLE STEEL, STAINLESS STEEL (LARGE SCALE) ALUMINUM (LARGE SCALE) OTHER METALS (LARGE SCALE) WOOD FRAMING - CONTINUOUS (LARGE SCALE) WOOD FRAMING - DISCONTINUOUS (LARGE SCALE)	PLYWOOD (LARGE SCALE) FINISH WOOD (LARGE SCALE) EIFS INSULATION BOARD (LARGE SCALE) SEMI-RIGID INSULATION (LARGE SCALE) BATT INSULATION (LARGE SCALE) MORTAR, SAND, FIREPROOFING, STUCCO, GYPSUM BOARD TERRAZZO (LARGE SCALE) COMPOSITE BOARD (LARGE SCALE) ACOUSTIC TILE (LARGE SCALE) PROTECTION BOARD (LARGE SCALE) CERAMIC TILE (LARGE SCALE) GLASS (LARGE SCALE)
ELEVATION	PLASTER CONCRETE MASONRY, METAL SIDING (HORIZONTAL) GLASS BLOCK, CERAMIC TILE	METAL SIDING (VERTICAL) GLASS

ARCHITECTURAL GENERAL NOTES

THE FOLLOWING GENERAL NOTES APPLY TO ALL ARCHITECTURAL SERIES SHEETS. FOR GENERAL NOTES APPLICABLE TO ALL SHEETS REFER TO THE "PROJECT GENERAL NOTES".

A. THE ARCHITECTURAL SERIES SHEETS ARE PART OF A COMPLETE SET OF CONSTRUCTION DOCUMENTS DESCRIBING THE WORK FOR THIS PROJECT. USERS OF THESE DOCUMENTS ARE RESPONSIBLE TO REVIEW ALL CONSTRUCTION DOCUMENTS TO UNDERSTAND AND COORDINATE THE GRAPHIC AND ANNOTATED INFORMATION PROVIDED IN THESE ARCHITECTURAL SERIES SHEETS.

B. EXCEPT WHERE DIRECTED TO PLACE ITEMS OF WORK AT THE APPROXIMATE LOCATIONS SHOWN, DO NOT SCALE DRAWINGS FOR DIMENSIONAL INFORMATION. ALL ELEMENTS OF THE DRAWINGS MAY NOT BE DRAWN TO EXACT SCALE. ALL DIMENSIONS REQUIRED ARE SHOWN OR MAY BE DERIVED FROM THOSE SHOWN ON THE DRAWINGS: DETAIL PLANS, ELEVATIONS, SECTIONS, DETAILS, SCHEDULES, AND SPECIFICATIONS.

C. ALL VISUALLY EXPOSED STRUCTURAL, MECHANICAL AND ELECTRICAL ELEMENTS, INCLUDING EXPOSED METAL FLOOR AND ROOF DECK, ARE TO BE PAINTED UNLESS OTHERWISE NOTED. THIS INCLUDES ELEMENTS THAT MAY BE VISIBLY THROUGH GRILLES, LOUVERS OR CEILING. COLORS AND PAINT MATERIALS ARE DEFINED IN THE FINISH SCHEDULE. THE SPECIFICATIONS, AND THE DRAWINGS AS APPLICABLE TO THE CONSTRUCTION DOCUMENTS.

REFERENCE ELEVATION DEFINITIONS

1. THE TERM "REFERENCE" ELEVATION OR DIMENSIONS REFERS TO A NOMINAL WORK POINT. THE ACTUAL ELEVATION MAY VARY FROM THE REFERENCE POINT. REFER TO APPLICABLE DETAIL TO DETERMINE THE RELATIONSHIP BETWEEN THE ACTUAL ELEVATION OR DIMENSION AND THE STATED REFERENCE POINT.

2. THE DESIGN REFERENCE ELEVATION +0'-0" SHOWN ON THE ARCHITECTURAL DRAWINGS CORRESPONDS TO THE FINISH FLOOR ELEVATION OF THE GROUND FLOOR. ESTABLISH THE ACTUAL ELEVATION WITH RESPECT TO SITE-SPECIFIC BENCHMARKS AND CONTROL POINTS AS DEFINED IN THE CIVIL DRAWINGS.

3. "FINISH FLOOR" ELEVATIONS ARE MEASURED AT THE TOP OF THE CONCRETE FLOOR SLAB UNLESS OTHERWISE NOTED. APPLIED FINISHES SUCH AS RESILIENT FLOORING OR CARPET MAY RAISE THE ACTUAL FINISH SURFACE ABOVE THE REFERENCE ELEVATION PROVIDED FOR THE FINISH FLOOR.

4. WHERE CONCRETE FLOOR SLAB IS DERESSED TO ACCOMMODATE FLOOR BEDS, SETTING BEDS, RAISED ACCESS FLOORS, AND OTHER SIMILAR FLOOR ASSEMBLIES, FINISHED FLOOR ELEVATIONS ARE MEASURED AS IF CONCRETE DEPRESSION DOES NOT OCCUR.

5. CEILING HEIGHT ELEVATIONS ARE MEASURED TO BOTTOM OF FINISH SURFACES AND STATED IN RELATION TO DISTANCE ABOVE THE REFERENCE ELEVATION FOR THE FINISH FLOOR UNLESS OTHERWISE NOTED.

6. ROOF ELEVATIONS ARE MEASURED TO TOP OF SURFACES AND STATED IN RELATION TO DISTANCE ABOVE THE REFERENCE ELEVATION PROVIDED FOR THE UPPERMOST FINISH FLOOR UNLESS OTHERWISE NOTED. ELEVATIONS GIVEN ARE TO TOP OF STEEL (TOS), TOP OF DECK (TOD), OR TOP OF TAPERED INSULATION (TOI) UNLESS OTHERWISE NOTED.

ARCHITECTURAL ASSEMBLY SYSTEM TAGS

TYPICAL ARCHITECTURAL ASSEMBLY IDENTIFICATION MARK	FOR THE ASSEMBLY TYPES LISTED, SEE THE FOLLOWING SHEETS FOR SYSTEM DETAILS AND DESCRIPTIONS: PLAN SECTION	ASSEMBLY TYPE A000X
	TYPE A - EXTERIOR WALLS - ABOVE GRADE - SHEET A5.0.X TYPE B - EXTERIOR WALLS - BELOW GRADE - SHEET A5.0.X TYPE H - EXTERIOR WALLS - 1/2 HEIGHT AND PARAPETS - SHEET A5.0.X TYPE L - FOUNDATION SLAB SYSTEMS - SHEET A5.0.X TYPE R - ROOFING SYSTEMS - SHEET A5.0.X TYPE S - EXTERIOR SOFFITS - SHEET A5.0.X TYPE T - EXTERIOR TRIM AND COPING - SHEET A5.0.X TYPE Q - EXTERIOR GLAZING / PANEL SYSTEMS - SHEET A5.4.X TYPE X - EXTERIOR FENESTRATION SYSTEMS - SHEET A5.4.X TYPE W - EXTERIOR FRAMED WINDOWS AND LOUVERS - SHEET A5.4.X TYPE F - FLOORING SYSTEMS - SHEET A9.1.X TYPE P - INTERIOR WALL PARTITIONS - SHEET A9.2.X TYPE C - INTERIOR CEILINGS - SHEET A9.4.X TYPE E - INTERIOR GLAZING / PANEL SYSTEMS - SHEET A9.3.X TYPE Y - INTERIOR FENESTRATION SYSTEMS - SHEET A9.3.X TYPE M - INTERIOR FRAMED WINDOWS AND LOUVERS - SHEET A9.3.X	ASSEMBLY NAME - REPRESENTING - - MAJOR GROUP - - FINISH SYSTEM - - SUBSTRATE - ASSEMBLY VARIABLE (NOT ALWAYS PRESENT)

MODULAR LAYOUT / DETAIL NUMBER

DETAIL MODULE LAYOUT	THE PURPOSE OF THIS SHEET IS TO ILLUSTRATE AND DEFINE TYPICAL GRAPHIC SYMBOLS WHICH MAY TYPICALLY OCCUR ON THE ARCHITECTURAL DRAWINGS.
DETAIL NUMBERING EXAMPLE	THE NUMBER OF THE MODULE WHICH OCCURS IN THE LOWER LEFT CORNER OF A SINGLE MODULE OR SEVERAL MODULES GROUPED TOGETHER WILL DEFINE THE FINAL DETAIL NUMBER AS SHOWN IN THE ILLUSTRATION TO THE LEFT. ALTHOUGH THE MODULE NUMBERS OCCUR IN CONSECUTIVE ORDER, NOT ALL NUMBERS ARE NECESSARILY USED ON EACH SHEET.

PMB Real Estate Services
Real Estate Management Solutions for Healthcare

PMB Santa Cruz, LLC
3394 Carmel Mountain Road,
Suite 200,
San Diego, CA 92121

SMITHGROUP
Architect
301 BATTERY STREET
7TH FLOOR
SAN FRANCISCO, CA 94111
415.227.0100
www.smithgroup.com

ARUP
MEP
ARUP
560 Mission Street, Suite 700
San Francisco, CA 94105
415.597.9445

WALKER CONSULTANTS
Parking
WALKER CONSULTANTS
601 California St., Suite 820
San Francisco, CA 94108
415.444.0630

IFLAND ENGINEERS
Civil
IFLAND ENGINEERS, INC.
5300 Soquel Avenue, Suite 101
Santa Cruz, CA 95062
831.426.5313

miyamoto.
Structural
MIYAMOTO INTERNATIONAL, INC.
555 Montgomery Street, Suite 803
San Francisco, CA 94111
415.230.7097

ISSUED FOR	REV	DATE
PERMIT RESUBMITTAL		06/24/2019
PERMIT APPLICATION		03/27/2019
PRE-APPLICATION SUBMITTAL		08/23/2018

SEALS AND SIGNATURES

NOT FOR CONSTRUCTION

KEYPLAN

SHEET TITLE
ARCHITECTURAL ABBREVIATIONS AND SYMBOLS

PROJECT NUMBER 21739.000
SHEET NUMBER **A0.0.1**

